

Mission Middle Community School

Community Schools is an initiative that brings stakeholders-students, family members, staff, and community members- together to determine what the shared vision, goals, and values are for our school.

We start by asking questions, seeking input and feedback with on-going problems.

Participation in our Assets and Needs Assessment:



Participation occurred from October '22-March '23

What did we learn?

Students

- Often feel stressed
- Mental Health (anxiety, depression) makes school difficult
- The transition to 6 teachers is difficult
- Would like someone to talk to at school
- More access to tutoring
- Need access to free food
- Would like more after school activities

School Staff

- Believes mental health services, behavior management programs, and programs to help parents help their child would help our students be more successful in school.
- 2/3 are aware of JUSD community resources

Families

- Financial concerns and college and career readiness make success in school difficult.
- Mental health services and behavior management programs would help their child have greater success in school.
- 95% feel they have adequate tools to support their child at home.
- Would like to see activities/trainings to help their child handle peer pressure, cope with anxiety, and prepare for college.

Community Members

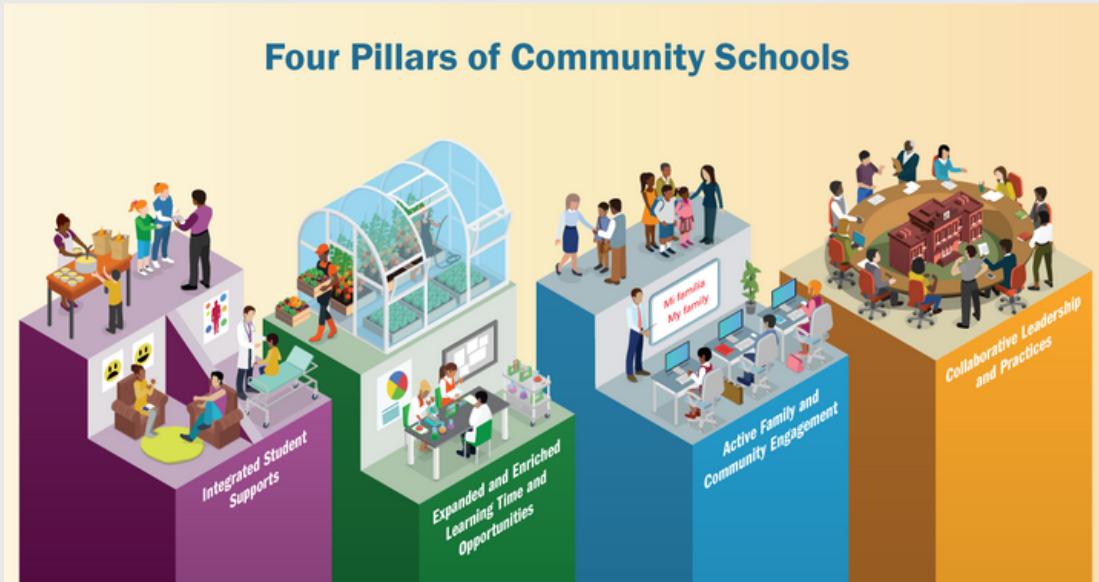
- In the 22-23 school year we did not include any community members in our data collection, but we plan to do so in the future

Stakeholder responses and school data determines our

2023-24 Priority Needs

based on the 4-pillars of Community Schools:

- Integrated student supports
- Family and community engagement
- Collaborative leadership and practices for educators and administrators
- Extended learning time and opportunities



Mission Middle School 2023-24 Community School Highlights

Integrated Supports

- Wellness Center with a BHA and 2 BHPS
- Dental Visits
- Wellness Wednesday activities at lunch and after school.
- Incentives for positive attendance

Active Family and Community Engagement

- Mental Health and Wellness parent workshops
- Watch DOGS

Collaborative Leadership Practice

- Student Advisory Council
- Community Schools Committee
- Coordination of Services Team

Expanded and Enriched Learning

- Speciality advisory classes
- ELO Classes after school
- Educational Fieldtrips